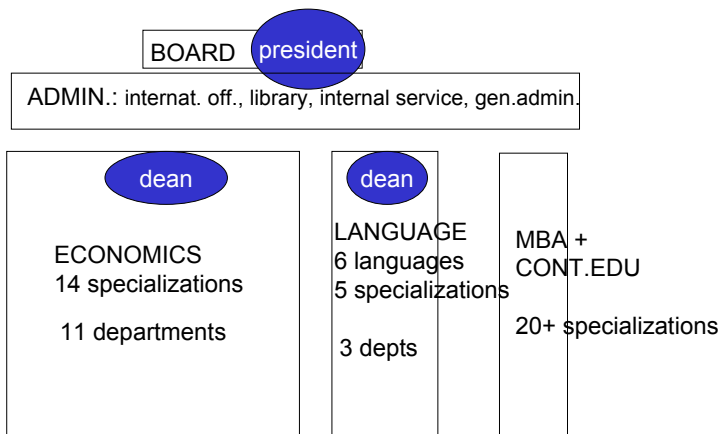


# 1

## CBS ORGANIZATION CHART



With close to 14,000 students of which 60% in full-time programmes and 40% in part-time programmes, CBS is the largest business school in Northern Europe

## Applicants and enrolment - undergraduate studies

### Economics faculty:

2,409 new enrolments  
in 11 3-year  
programmes:

#### Business

- and law
- and math
- and IT
- and philosophy
- and psychology
- and communication
- and service mgmnt
- international (in English)

Business/culture/language  
Asian Studies program

### Language Faculty:

749 new enrolments

## Applicants and enrolment - graduate studies

### Faculty of Economics:

1200 new students in 11 2-year  
MsC programmes:

15 + Specializations: Finance,  
HRM, Internatl., Marketg.,  
Communication,, etc.

7 of them in English

### MBA programs:

10 part-time MBA  
programs, 1 full time

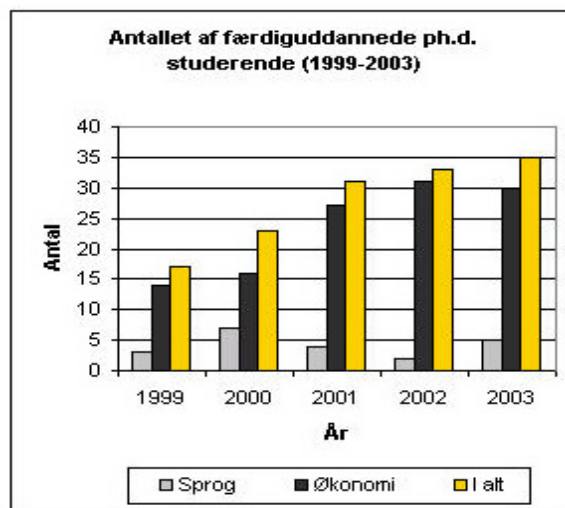
ca. 250 students  
enrolled

### Faculty of Language:

150 new students in 3  
2-year MA programs

## GRADUATES (november 2003)

<b>ECONOMICS</b>	<b>1999</b>	<b>2000</b>	<b>2001</b>	<b>2002</b>	<b>2003</b>
BSc	779	792	843	952	1.017
MSc	668	694	758	821	819
Graduate Diploma part 2	572	591	603	607	614
<b>TOTAL</b>	<b>2.019</b>	<b>2.077</b>	<b>2.204</b>	<b>2.380</b>	<b>2.450</b>
<b>LANGUAGES</b>					
BA	220	216	218	248	288
MA	105	96	121	115	118
Open university	171	161	219	152	59
<b>TOTAL</b>	<b>496</b>	<b>473</b>	<b>549</b>	<b>516</b>	<b>455</b>
<b>TOTAL</b>	<b>2.515</b>	<b>2.550</b>	<b>2.753</b>	<b>2.896</b>	<b>2.905</b>



	Mænd	Kvinder	I alt
<b>Academic staff</b>	<b>267</b>	<b>119</b>	<b>386</b>
- Economics	230	65	295
- Modern Languages	37	54	91
<b>Administrative staff</b>	<b>169</b>	<b>310</b>	<b>479</b>
- Economics	40	128	168
- Modern Languages	4	96	30
- Library & IT-Services	59	42	101
- CBS administration	66	114	180
<b>TOTAL</b>	<b>436</b>	<b>429</b>	<b>865</b>

<b>In- and outgoing exchange students</b>	<b>In</b>	<b>Out</b>	<b>Total</b>
Eastern Europe & Russia	55	22	75
Scandinavia	89	22	111
Europe	488	377	865
North America	216	222	438
Latin America	20	37	57
Asia & Australia	118	105	223
Africa & Middle East	0	7	7
<b>TOTAL</b>	<b>986</b>	<b>790</b>	<b>1,769</b>

## 2

### UNIVERSITIES AND STUDENT VALUES ACROSS NATIONS

Simon U. Kragh

Sven Bislev

Department of Intercultural Communication and Management,  
Copenhagen Business School

***Universities in different nations follow different norms***

***Students from different nations have different values***

-- are those differences alike?

-- are they diminishing because of globalization?

## UNIVERSITIES AND STUDENT VALUES ACROSS NATIONS

A survey based on:

- 386 foreign exchange students studying at Copenhagen Business School in 2002 and 2003
- +
- 430 Danish students from CBS, with experience from foreign business schools and universities.

The questionnaire was sent to the total populations of exchange students, ingoing and outgoing, and the respondents constitute ca. 30 and ca. 50 % of the respective populations

### University cultures are different blends of 3 groups of values:

"Traditional": absolute beliefs, a given order of thought and action

"Modern": rationality, objectivity

"Postmodern": relativity, subjectivity

### The mixture can depend on:

Evolution: a progression from traditional via modern to post-modern

Cultural backgrounds: stable dispositions towards one or the other

## Values related to knowledge and education:

- perceptions of objectivity and subjectivity, of absolute and relative truth
- attitudes and experiences of institutional authority - of institutional vs. scientific hierarchy
- attitudes towards and experiences of cooperation vs. individual attainment and competition in the university
- values related to participative features of the learning process

## ***1.Reproduction of facts versus critical discussion:***

- a) "At your [home/exchange] university, what is mostly emphasized by professors: Reproduction of facts and textbook knowledge, or critical discussion and individual perspectives?"
- b) "What do you prefer?"

## **2. Authoritarian or egalitarian relations:**

a) "At your [home/exchange] university, how is the relationship between professors and students: Professors treat students as equals, or professors are authoritarian?"

b) "At your [home/exchange] university, how do you address professors: formally, by title and surname, or informally, using first name?"

c) "What do you prefer?"

## **3. Amount of student group-work:**

a) "At your [home/exchange] university, how much is group work used in teaching?"

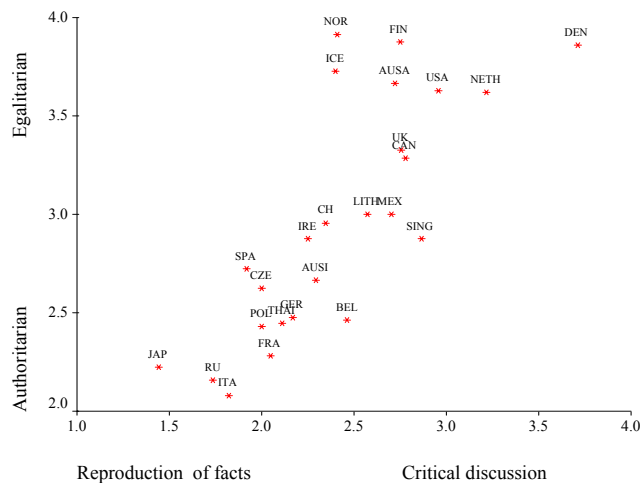
b) "What do you prefer?"

#### 4. Amount of business cases:

a) "At your [home/exchange] university, how much are business cases used in teaching?"

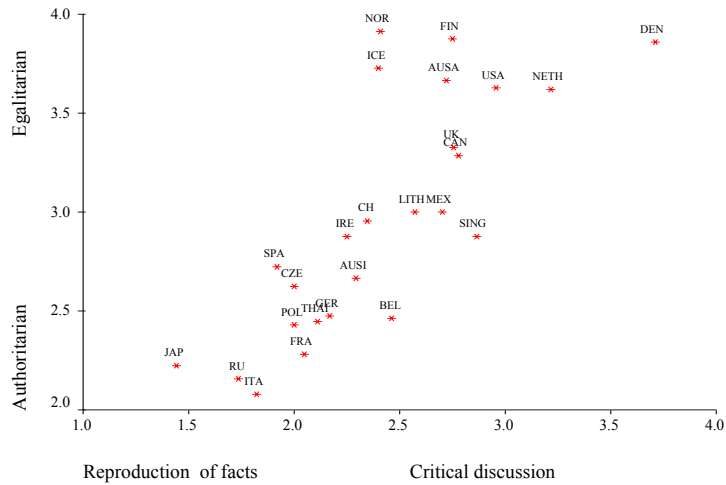
b) "What do you prefer?"

#### Relation between professor-student relations and the character of classroom teaching

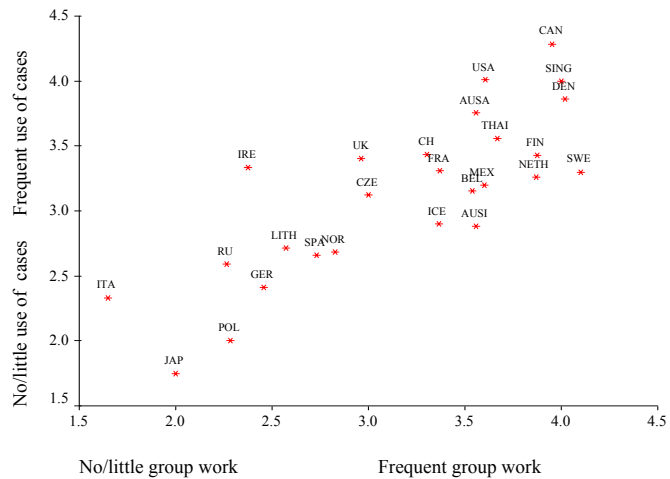




### Use of group work and professor-student relationship



### Use of group work and of business cases



### University Culture and Hofstede's 4 Dimensions

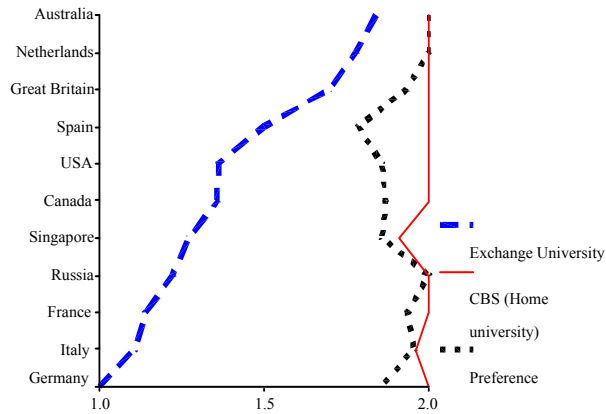
	Power Distance	Individualism - Collectivism	Uncertainty Avoidance	Masculinity - Femininity
Addressing Professors Informally	-0.40	0.28	-0.54*	-0.62**
Egalitarian relationships between professors and Students	-0.51*	0.39	-0.62**	-0.64**
Critical Discussion Emphasized by Professors	-0.33	0.30	-0.70**	-0.57**
Frequent use of Business Cases	-0.37	-0.15	-0.62**	-0.32
Frequent use of Group Work	-0.24	-0.06	-0.41	-0.54*

### Students and their home universities compared

	Mean	St. Deviation
<b>Informality between Professors and Students (addressing professors)</b>		
Students' preferences	1.75	0.20
Home universities	1.34	0.38
<b>Emphasis on Critical Discussion</b>		
Students' preferences	3.33	0.43
Home Universities	2.56	0.51
<b>Frequency of Business Cases</b>		
Students' preferences	3.91	0.33
Home universities	3.23	0.65
<b>Frequency of Group-Work</b>		
Students' home universities	3.43	0.30
Home universities	3.27	0.74

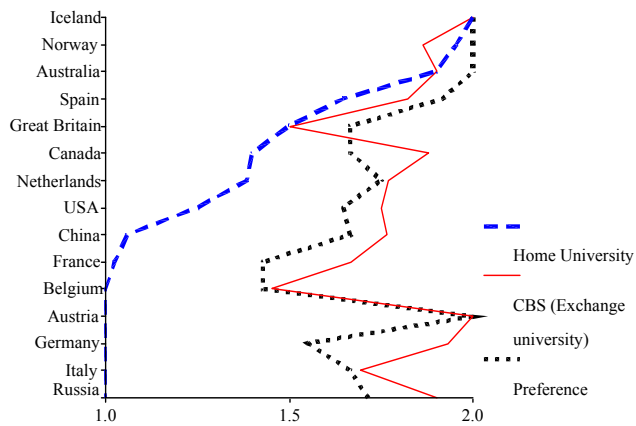
## Danish Students

### Adressing Professors



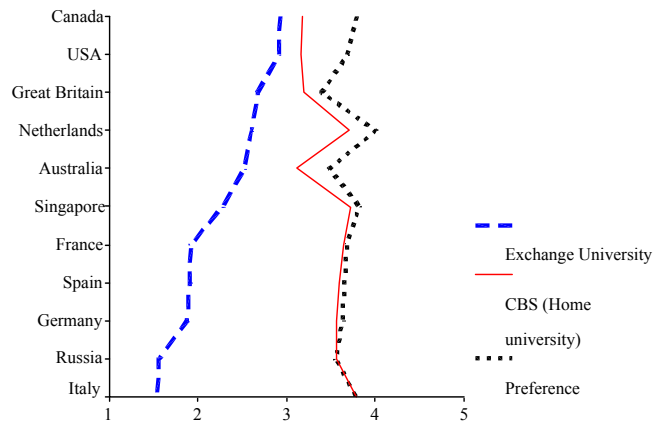
## Foreign Students

### Adressing Professors



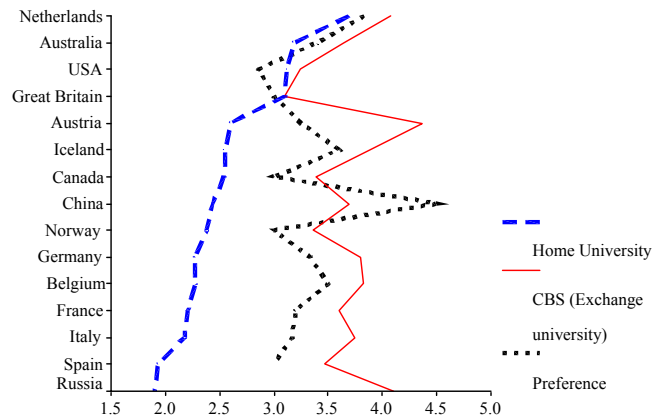
## Danish Students

### Discussion or Reproduction of Facts



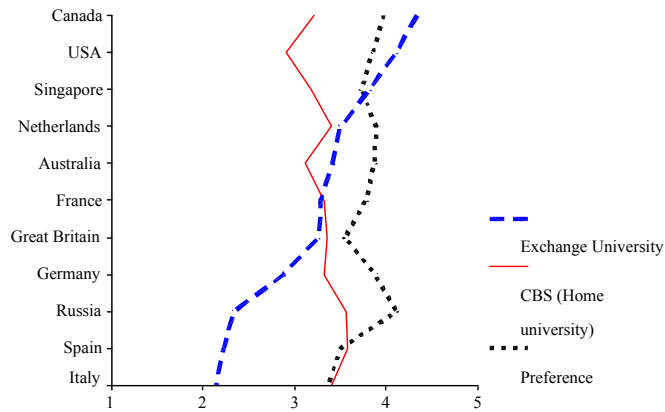
## Foreign Students

### Reproduction of Facts or Discussion



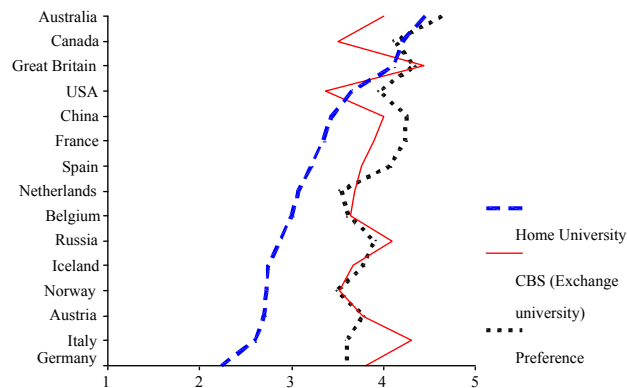
## Danish Students

### Business Cases



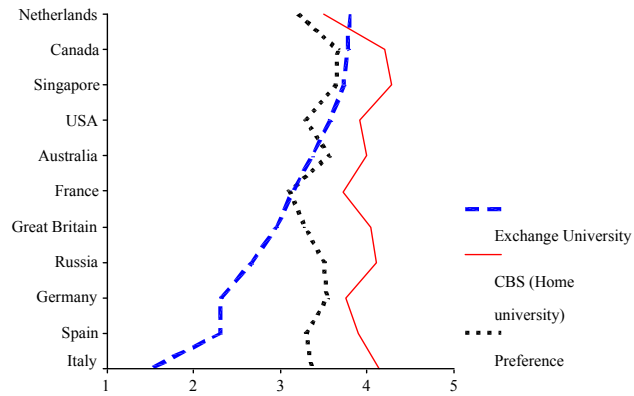
## Foreign Students

### Business Cases



## Danish Students

### Group-Work



## Foreign Students

### Group-Work

